

# CRUSH TESTER



Marketed by:



**SAURASHTRA  
SYSTOPACK PVT. LTD.**

Serviced by:



**SAURASHTRA MARKETING  
CORPORATION**



Manufactured by: **UBIQUE**, Pune

# CRUSH TESTER

The first of its kind in India, to fulfill the basic need of quality control and development for manufacturers and users of paper packaging. An electronic instrument to measure and directly indicates the Compression Strength of small cartons, Edge Crush, Flat Crush and Pin Adhesion of Corrugated Board and Ring Crush and Corrugating Medium Test (CMT) of Paper and Paperboard.

An useful equipment to determine the probable compression strength of corrugated and solid fibreboard boxes by testing the paper and paperboard used in making such boxes.

## Available in Three Models

- I Digital Model
- II Micro Processor-based Digital Model
- III Fully Automatic Model with Integrated Computerised Touch Screen Panel

## I Digital Model



## Salient Features

- Direct Digital Read-out of Load
- Electro-mechanical Loading System
- Sophisticated Electronic Controls for precision and easy operation
- Peak-hold facility
- Supplied with attachments for testing Flat Crush, Edge Crush and Ring Crush. Other attachments at extra cost.

## Technical Specifications

Load Cell Capacity	500 kgf
Load Cell Sensitivity	± 0.2% Full Scale
Load Indicator Resolution	0.1% F.S.
Load Indicator Accuracy	± 0.4% F.S.
Platen Size	100 mm dia
Admit between Platen	20-75 mm
Loading Speed	10±2.0 mm per minute
Power Requirement	0.5 kW Single Phase 220 Volts
Dimensions in mm (L x W x H)	550 x 620 x 840
Weight in kg	80 (approx.)

## II Micro Processor-based Digital Model



## Additional Features

- Printer Port facility to generate printed report (80 column Dot Matrix printer to be provided by the user).
- RS 232 Port, with necessary software, to transfer data to computer (computer to be provided by user).

UBIQUE CRUSH TESTER TEST REPORT					
USER : ABC LTD.					
Party : XYZ LTD.		: 4444444A		OPERATOR : 66666666	
REF A : 11111121		REF B : 2222225		REF C : 33A3333D	
GSM : 0190		PLY : 0001			
TEST TYPE : RING CRUSH					
LIMITS HI: 13.0 Kg LO: 1.0 Kg					
SAMPLE	DATE	TIME	TEST VALUE	REJECT	ACCEPT
01	16/09/98	04:15:01 PM	0.48 Kg	----	LO
02	16/09/98	04:16:29 PM	2.83 Kg		OK
03	16/09/98	04:17:20 PM	3.04 Kg		OK
04	16/09/98	04:17:51 PM	0.69 Kg	----	LO
05	16/09/98	04:18:26 PM	0.62 Kg	----	LO
06	16/09/98	04:19:23 PM	1.74 Kg		OK
07	16/09/98	04:19:40 PM	12.90 Kg		OK
08	16/09/98	04:20:41 PM	10.27 Kg		OK
TOTAL SAMPLES		: 08			
VALID SAMPLES		: 05 (62.5%)			
REJECT (HI) SAMPLES		: 00 (0.0%)			
REJECT (LO) SAMPLES		: 03 (37.5%)			
MIN VALUE OF VALID SAMPLES			: 1.75 Kg		
MAX VALUE OF VALID SAMPLES			: 12.90 Kg		
AVERAGE VALUE OF VALID SAMPLES			: 6.15 Kg		

### III Fully Automatic Model with Integrated Computerised Touch Screen Control Panel

The "Touch Screen Range of Equipments" will enhance your testing practices and experience to a great level. Every feature will impact your operation in a big way.

#### Features that Enhance Applications

- **Easy to use Control Panel:**  
Provide a MMI (Man - Machine Interface) on a touch panel.
- **Graphic User Interface:**  
Helps you navigate through procedures and functions.
- **On-line Reporting:**  
Comparative reports in reference to previously conducted test can be generated on the machine itself to help immediate comparison and spot analysis.
- **Networking:**  
Easy network compatibility to help you remotely access, view and draw data over local network of your workplace.
- **Enhanced Storage:**  
Data can be stored for long duration and selective maintenance of data can be done for ease of reference in the future.

#### Advantages

- Flexibility to access different menu options with ease.
- Self-guided User Interface ensures maximum user-friendliness. All test parameters can be programmed referred, updated, edited and saved for future use.
- The on-line reporting facility allows to carry out comparative analysis of the different tests that have been conducted.
- Networking ability takes testing to the next level.
- Touch Screen range of equipments are able to communicate with each other through a centralized Lab Management Software.
- Enhanced storage facility allows building a vast data library of all tests carried out at various points.

#### Suitable to Test as per:

<b>Flat Crush Test</b>	
TAPPI	T 808 om-92
FEFCO	TM 6 1986
IS	4006 (Part II) 1976
<b>Edge Crush Test</b>	
TAPPI	T 811 om-88
FEFCO	TM 8 1997
IS	7063 (Part II) 1976
<b>Ring Crush Test</b>	
TAPPI	T 818 om-87
IS	12192 (2002)
FCBM	19:98
<b>Pin Adhesion Test</b>	
TAPPI	T 821 om-96
FEFCO	TM 11 1985
IS	4006 (Part I) 1966
<b>Concora Medium Test (CMT)</b>	
TAPPI	T 809 om-99
IS	7263 (1994)

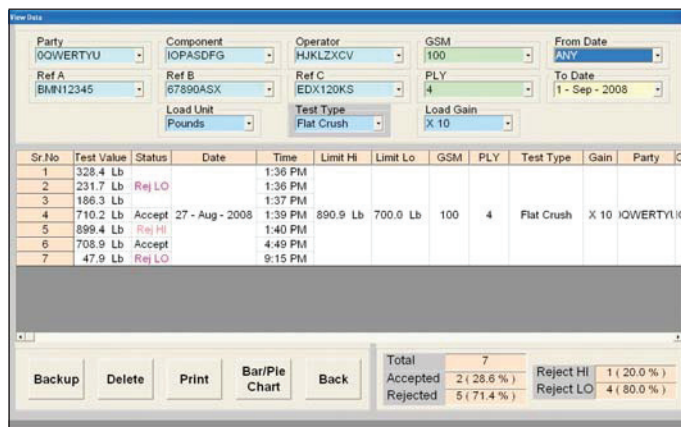
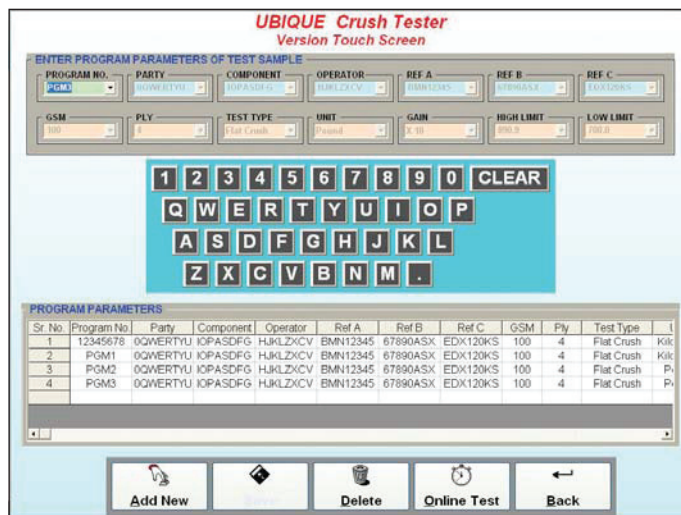
Available in Two Models



**Touch Screen Model**

Product Code: UCR-TS

Dimension in mm (L x W x H) : 770 x 690 x 920



## Crush Tester – *Signature Model*



UCR-TS-SN

Our Signature Model Crush Tester is the most advanced Crush tester offering the widest range of crush tests. The new customized Operating Interface offers unparalleled features for the delicate tests on the machine.

The traditional Crush tester like UCR, UCR-P & UCR-TS perform all crush tests with a Peak Load principle. The NEW SIGNATURE MODEL uses state of the art servo technology to ensure that loading platen displacement is factored in while sensing the load values. This improves the all over repeatability and reproducibility of results.

**The machine offers the following tests:**

**Standard Tests:**

- Ring Crush Test of Paper
- Flat Crust Test of Corrugated Board
- Edge Crush Test of Corrugated Board
- Operator Defined test (Customizable test)

**Optional Tests:**

- Corrugated Crush Test (requires Sample Fluter)
- Corrugated Medium Test (requires Sample Fluter)
- Pin Adhesion Test
- Score quality Test

<b>Display</b>	<b>Touch Panel Interface or PC</b>
TYPE	Constant Rate of Travel
Loading Mechanism	Electro-mechanical loading system using Lead Screw/s driven by suitably reduced Servo Motor and Drive.
Loading Speed	<ul style="list-style-type: none"> <li>• Fast approach and retreat</li> <li>• Auto change to test speed</li> </ul>
Load Cell	500 Kgf
Load Indicator resolution	0.1% FS (Full Scale) of Load Cell capacity
Load Indicator accuracy	± 0.4% FS of Load Cell capacity
Admit Between Platens	<ul style="list-style-type: none"> <li>• 100 mm</li> </ul>
Length Indicator resolutions	<ul style="list-style-type: none"> <li>• 0.1 mm</li> <li>• 0.01 mm (On Request)</li> </ul>
Length Indicator Accuracy	± 0.2 mm
Power requirement	Single Phase, 230 VAC, with independent potential free neutral and earthing
Fixtures	<b>ECT</b> – Edge Crush Test <b>RCT</b> – Ring Crush Test <b>FCT</b> – Flat Crush Test

Since we are continuously improving and upgrading the equipment, the design and specifications of all models featured here are subject to change without notice.

Marketed by:



**SAURASHTRA  
SYSTOPACK PVT. LTD.**

CIN-U33123MH1998PTC113502

Serviced by:



**SAURASHTRA MARKETING  
CORPORATION**

